

RNI No. 31940/77 Reg. No. MH/MP/South-83/2012-14 Date of Publication: 1st of every month. Posted at Patrika Channel Sorting office, Mumbai-400001 on 1st & 2nd of every month.

Inside Outside

THE INDIAN DESIGN MAGAZINE

www.insideoutside.in

ISSUE 339

SEPTEMBER 2013

₹ 100



FEATURING

Sunil Patil • Sharukh Mistry
_OPOLIS Architects
David Guerra • SpaceMatters
Richa Bahl

COVER STORY Dipen Gada's profile brings forth his versatile oeuvre

contents

2013

- 21 Editor's Letter
- 26 Letters
- 40 Art – A Ramachandran
- 42 Art – KK Raghavan
- 44 Designer Speak – Srila Mookherjee
Embellished Glassworks
- 46 Out of the Box – Say Cheers
- 50 Furniture – Sofa-cum-Bed
- 52 At the Click of the Mouse
- 188 Snippets
- 191 Access Point
- 196 Advertisers' Directory



30 A DREAM SERIES A DREAM COME TRUE

Architects Ankita and Pratyosh respond to our request for giving us their own interpretation of design and functionality to sketch a 'Dream Bedroom'.

67 INTERVIEW MEET SANJAY PURI

Kanupriya Garg speaks to Sanjay Puri, founder of Sanjay Puri Architects (SPA), about his unique architectural style and extensive design portfolio.

81 PROFILE A VERSATILE OEUVRE

Devyani Jayakar talks to Dipen Gada about his design for a restaurant and two bungalows in Vadodara, each one with a distinctive aesthetic, tailor-made for its context and use.
Photographs: Tejas Shah

109 APARTMENT HARMONIOUS HAVEN

Sonal Sancheti and Rahul Gore of _OPOLIS Architects have fashioned a home in Pune that is devoid of clutter and brimming with sunny energy. This dose of simple living seems to be just what the doctor ordered.

Text: Mitalee Kurdekar Photographs: Hemant Patil



september 2013 no. 339

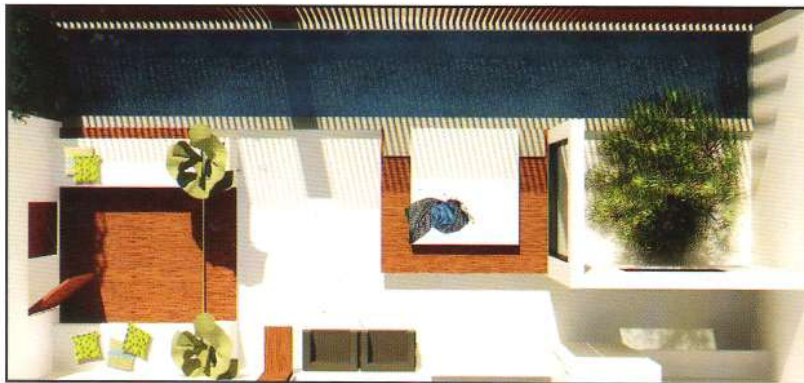
COVER PHOTOGRAPH:
TEJAS SHAH

Architects Ankita and Pratyoosh of Studio An-V-Thot Architects Pvt Ltd, respond to our request for giving us their own interpretation of design and functionality to sketch a 'Dream Bedroom'.


The world is harsh, I am at peace.

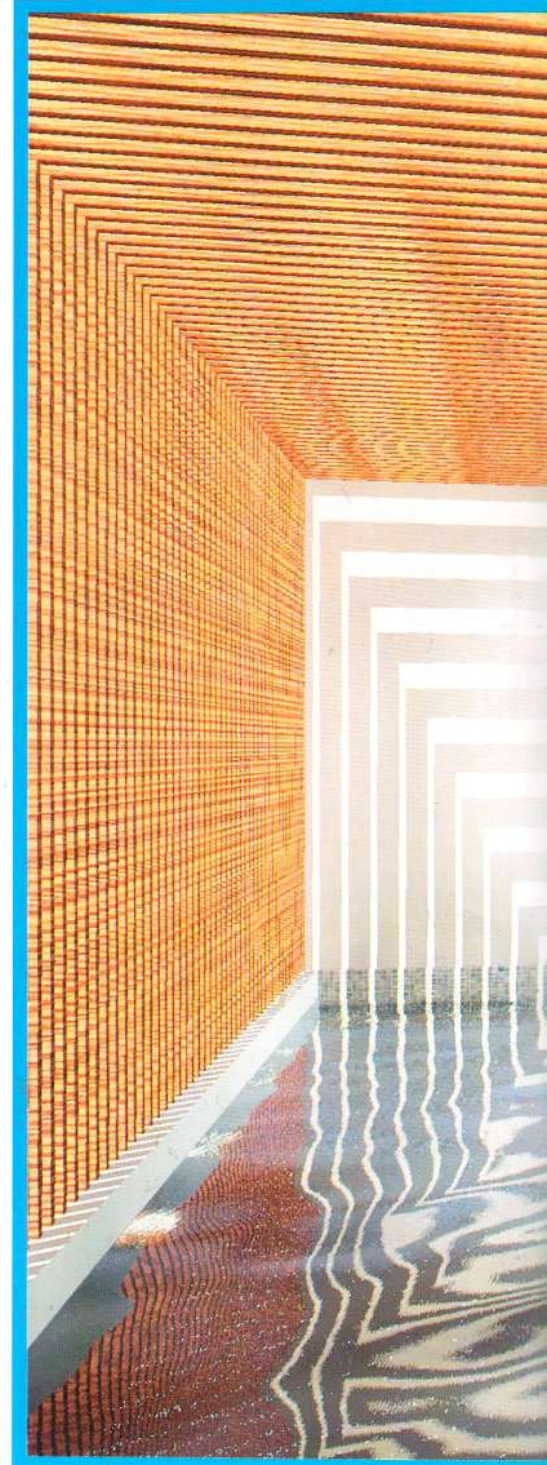
'It was difficult to live up to the brief presented to us, as a "Dream Bedroom" is not something we get to design every day. Through an interactive process, we finally settled on the basic beauty and the fundamentals of life. The bedroom we showcase is full of vigour, with the presence of nature at close proximity.

'The bedroom welcomes nature within its periphery. A full grown tree on a pebble bed acting as a court, is positioned at the deep end. A water body runs all along the bed, where it meets a high grass curtain. As a modern lifestyle does not limit the bedroom to be used just for sleeping, the space we have imagined, breaks this constraint and brings in a large



living space with a capacity to seat six to eight people. The calm ambience is maintained through landscaped seating, the bed unit raised on a platform, straight lines and a colour palette of grey and white. More colours will only come through the furnishings and fabrics. The greys and whites are complemented with the greens, blues and the browns of the landscape, water and wood respectively. The space never feels empty as there is a continuous play of light and shadow throughout the day. A small secluded study is also introduced for a peaceful read.

This bedroom charges users with enormous energy, and at the same time provides them with a space that fills their minds with peace and serenity. 



FACT FILE:

Design Firm: Studio An-V-Thot
Architects Pvt. Ltd

Design Team:
Ankita & Pratyosh

3D Artist: Lakshay Chauhan

Area: 600 sq ft



a
dream
come true!